



Symposium DMAT

Mathematics & Applications 24/03/23 | 2:00pm | Aud.2Ed.B

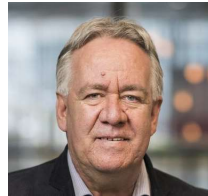
SPEAKERS | SUMMARY



Wil Schilders (TU Eindhoven & TU Munich - IAS)

Mathematics and Applications: an International Overview

There are many organizations worldwide for industrial and applied mathematics, and it is essential that we work together, sharing ideas and experiences. Mathematics is vital to industry, with a crucial role in developing digital twins, in combining computational science with machine learning, in developing new methods for high performance computing. In this talk, we will briefly touch upon all these aspects.



BIOGRAPHY. Wil Schilders worked in the electronics industry for 30 years before switching to academia. He has been the president of ECMI (2010-2011) and EU-MATHS-IN (2015-2020), and is president-elect of ICIAM. He is also the executive director of the Dutch Platform for Mathematics, and fellow of SIAM and the European Academy of Sciences. <https://www.tue.nl/en/research/researchers/wil-schilders/>

Ana Borges (ESTG, P.PORTO)

A mathematical strategy to assess water meters performance

In this talk a study, motivated by a water company's challenge that links a decrease in water consumption to water meters' malfunction, will be presented. The aim was to develop a strategy to detect decreasing water usage patterns, contributing to meter performance assessment. The basis of the approach is a combination of statistical methods.

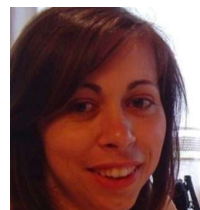


BIOGRAPHY. Ana Borges is currently an integrated member of the Centre for Innovation and Research in Business Sciences and Information Systems (CIICESI), of ESTG P.PORTO. Has experience in the application of mathematical and statistical methods in various areas, as evidenced by the participation in international conferences and publications in this area. She is the director of the Department of Natural and Exact Sciences and member of the Scientific Council. <https://orcid.org/0000-0003-4244-5393>

Eliana Costa e Silva (ESTG, P.PORTO)

Mathematics at work in industry

In this talk, the application and development of mathematical models for solving industrial challenges, will be discussed. Specifically, Case Studies on Scheduling Automobile Repairs and on Outsourcing in the Footwear Industry, will be presented.



BIOGRAPHY. Eliana Costa e Silva is a full member of the Center for Innovation and Research in Business Sciences and Information Systems (CIICESI) of ESTG, P.PORTO, and collaborator of the ALGORITMI Center of the University of Minho. She has experience in mathematical and statistical modeling, in data analysis and in implementation of solutions to real problems proposed by companies within the scope of the European Study Groups with Industry (ESGI) in which she has actively participated since 2012. <https://www.researchgate.net/profile/Eliana-Costa-E-Silva>